

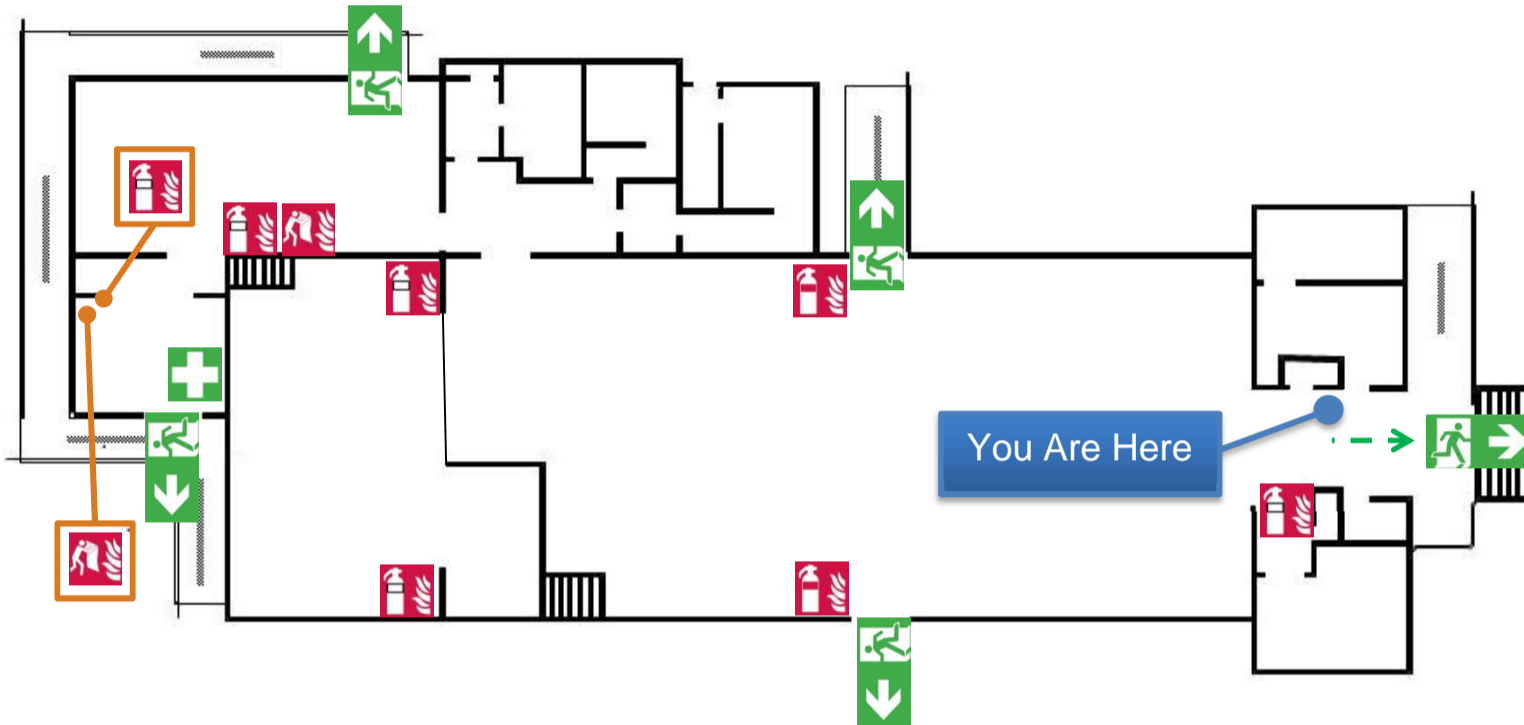
Evacuation Diagram

39 High Street, KIMBA, SA 5641

Access Street: High Street

Nearest Intersection: High Street & Cross Street

NOT TO SCALE



LEGEND



Dry Chemical Extinguisher



Water Extinguisher



Fire Blanket



First Aid Kit



Assembly Area



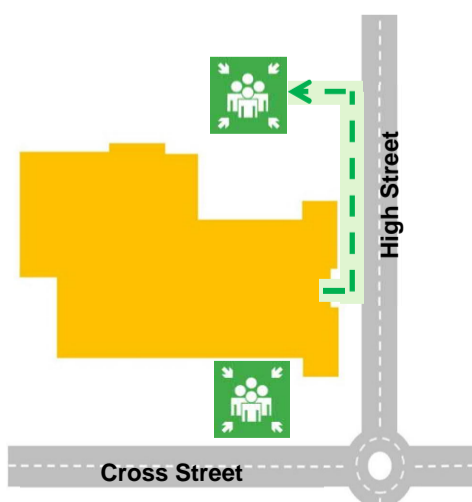
Emergency Exit



Paths of Travel

KIMBA SOLDIER'S MEMORIAL HALL

ASSEMBLY AREA



EMERGENCY INFORMATION



In case of emergency contact:

- **Police, Fire or Ambulance 000**
- **Police (non-urgent) 131 444**

On hearing the evacuation alarm or when directed by your Warden:

- evacuate the building via the nearest safe exit
- proceed to the assembly area, or as directed by your Warden/Emergency Services
- remain at the assembly area until directed by your Warden/Emergency Services
- do not re-enter the building until instructed by your Warden/Emergency Services