

Sleeps Hill Tunnel

Visual Story



Image: A long, arch-shaped tunnel made of white brick with colourful images of fungi projected onto the curved ceiling

Contents

3 | Visual Story

4 | Key Information

5 | The Details

6 | The Venue

7 | Entry Map

8 | Sensory Information

9 | Audio Description

10 | On the Day

11 | Getting to the Event

12 | Seating

13 | Facilities

14 | During the Event

16 | After the Event

16 | The Installations

23 | Contact

Sleeps Hill Tunnel 2025 acknowledges the Kaurna people as the traditional owners of the land. We pay our respects to their history, their connection to the lands, and their Elders past and present.

Visual Story

Visual Stories are designed to help prepare you for your visit. They include information about the venue and what will happen during the performance.

Visual Stories are suitable for people who wish to be familiar with what to expect prior to attending.

This Visual Story has been created by Access2Arts for Adelaide Fringe.

Key Information



Image: Art installation of giant neon-painted mushrooms under blacklight.

The Details

Overview

- Sleeps Hill Tunnel is a 2025 Adelaide Fringe event where patrons explore light, sound, and art installations in a historic South Australian tunnel.
- There are also “Tunnel Talks” sessions, where the tunnel owner guides groups through the tunnel, talking about its history.

Event Length

- Self-guided sessions run every 15 minutes between 10am and 6pm
- Tunnel Talk sessions run every day in the 11:30am, 2pm, and 6pm slots

Ages

- All ages

The Venue

- The event will take place at The Tunnels in Panorama.
- Online maps may take you to the wrong place. Instead, head to **Grandview Crescent, Panorama** and follow the event signage.
- The entire venue is smoke-free and alcohol-free.
- The entire venue is wheelchair accessible.
- The tunnel itself is a solid level surface with some accessible ramp sections.
- The tunnel is 377m long, and you will go to the end and then turn around and come back the same way, so a 750m journey (there are rest points and seats all the way along).

Entry Map

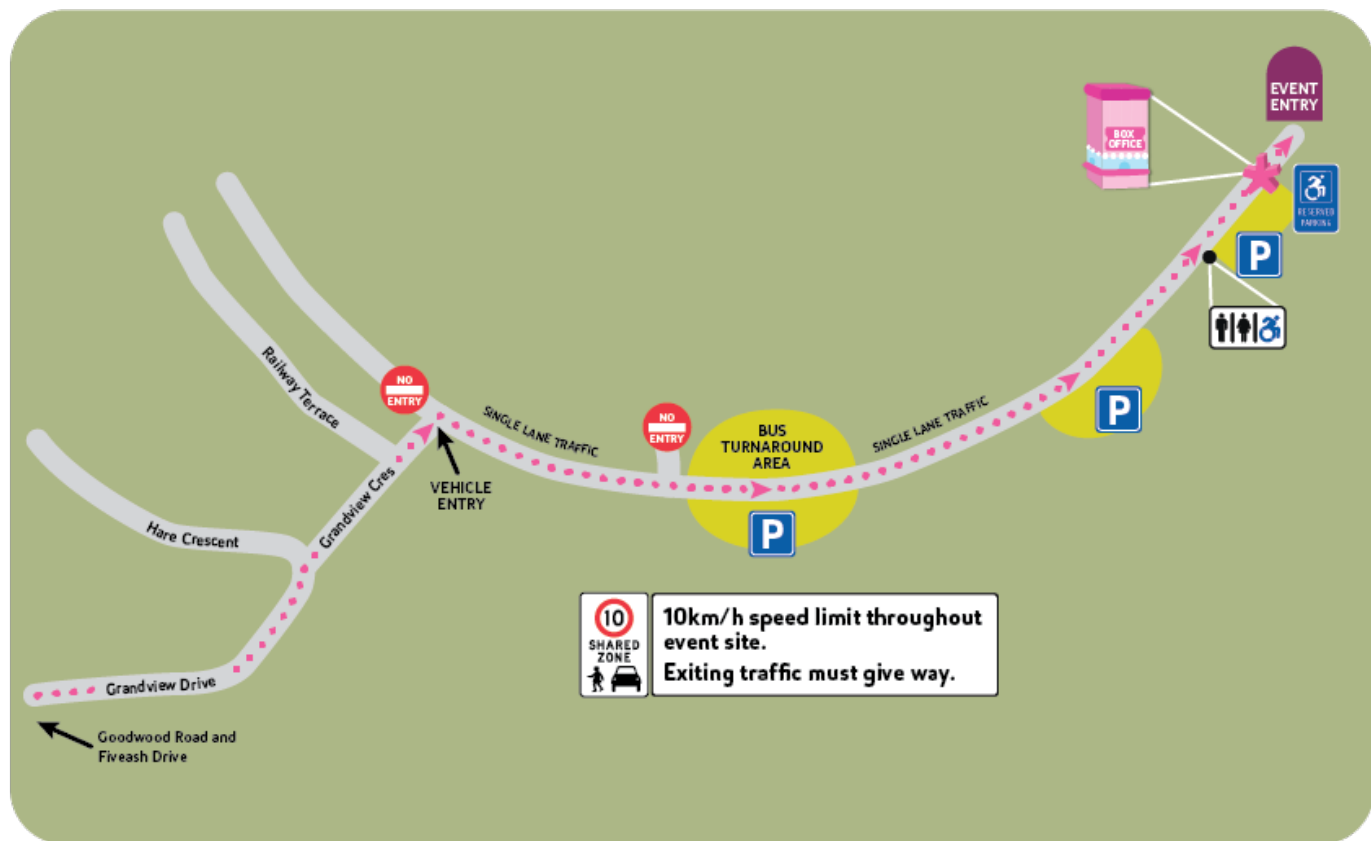


Image: Map showing traffic access from Grandview Crescent to event entry.

Sensory Information

- Outside of the tunnel in the carpark and waiting areas it may be hot and dusty.
- Inside the tunnel is divided into sections.
- Different sections in the tunnel will have different levels of sensory input.
- Sections include video and image projections, colourful lights, blacklight, neon, and a mirror room.
- Sections are divided by thick, heavy curtains that block out noise and light.
- Some of the sections have low lighting.

Audio Description

- The Sleeps Hill Tunnel is Audio Described
- Audio Description is designed to provide the visual information about each installation/artwork for people who are blind or low vision.
- It can also be very useful for people who are neurodivergent, or would just like some additional information about the works.
- If you want to listen to the Audio Description as you go through the tunnel you will need to download them onto your own device.
- You can access the Audio Descriptions or listen to them online at <https://adelaidefringe.com.au/fringetix/sleeps-hill-tunnel-af2025>

On the day

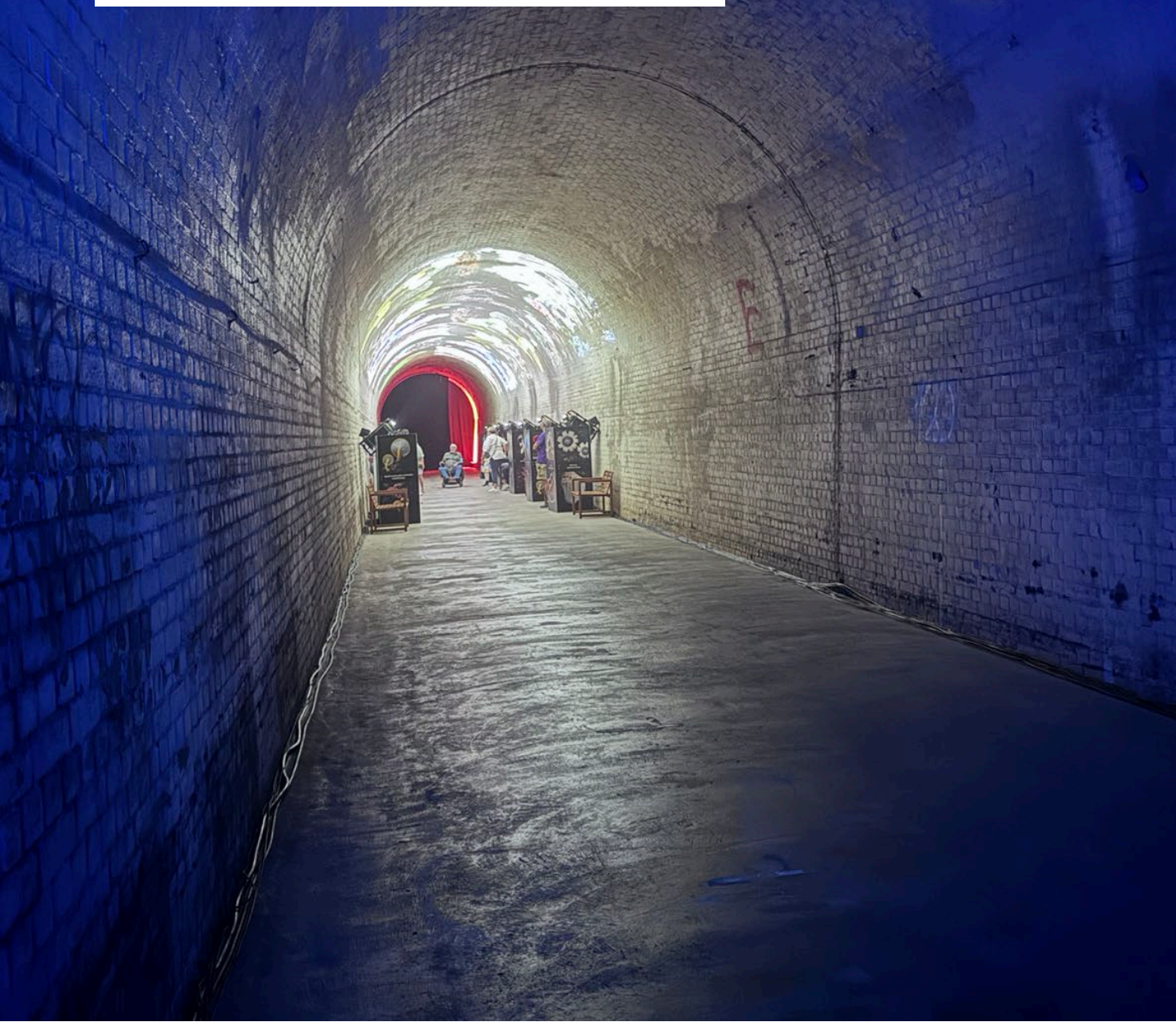


Image: A long white brick tunnel. In the foreground, the tunnel is lit in blue. In the background, the tunnel has white projections on the ceiling.

Getting to the Event

- Follow the signage from Grandview Crescent to get to the car park.
- There are lots of car parks, including accessible bays, near the entrance of the tunnel.
- You will need to show a copy of your ticket at the entrance. Event staff will scan you in.



Image: Front gate to Sleeps Hill Tunnel: a narrow, tarmac road with a colourful event sign.

Seating

- At different times of the day, the queue to the tunnel can be in direct sunlight. You are allowed to wait in your car or any other shaded area, just let the event staff know.
- There are seats with shade umbrellas outside of the tunnel.
- The tunnel is very long. There are bench seats in each section of the tunnel to take a break if you need.

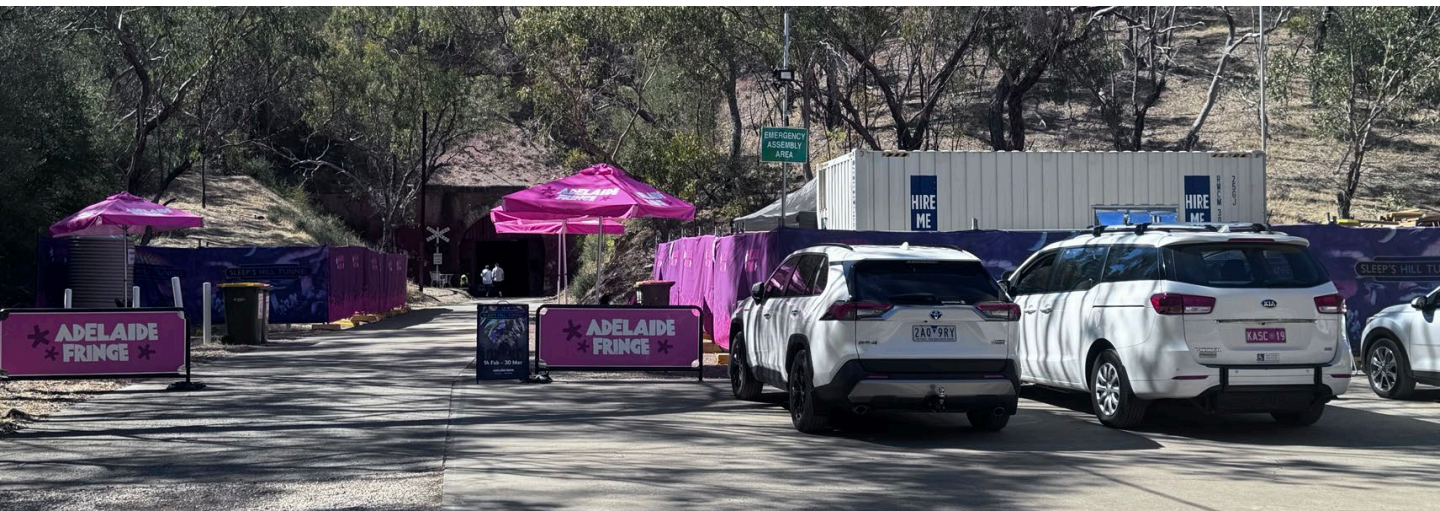


Image: The entrance to the tunnel surrounded by pink Adelaide Fringe signage and shade umbrellas, next to a paved car park.

Facilities

- There are toilets located behind the pink fences at the entrance area. This includes an accessible toilet. There are no toilets inside the tunnel, you will need to exit to go to the bathroom.
- Different mobility aids are available for loan at the front desk.
- Mobile phone connection is very limited onsite, you may not be able to get service in the tunnel.



Image: Inside the entrance to the tunnel, a staff member sits at a desk with Adelaide Fringe branding. Behind the desk are wheelchairs and seated rollators for loan.

During the Event

- In a standard, self-guided session, you can move through the space at your own speed.
- Other patrons might pass through the spaces as well.
- In a Tunnel Talks session, the tunnel owner will lead your group through the tunnel at the group's pace. If you need to slow down or take a break, tell the tour guide.
- There is seating (benches) in every section of the tunnel.
- There are also guides/volunteers throughout the tunnel that can assist you.

After the Event

- You are welcome to rest under the shade umbrellas in outside once you have left the tunnel.
- When you drive out you will go the same way as you drove in. You may need to pull over to let another car come through a gate or narrow section.

The Installations



Image: An antique railway handcar made of red metal displayed in the tunnel against a white brick wall. A sign with a “no touching” symbol is displayed alongside it.

1. Introduction & Tunnel History

Featuring introductory information to provide context of the Tunnel, newspaper clippings supplied by the History Trust of SA and the State Library of SA, as well as historical artefacts from Tunnel owner, Dave Munro, including a railway handcar from the early 1900s, and maps and diagrams of the original viaduct connecting the two tunnels. It was important this section allowed the audience to experience the novelty of being in the tunnel.

Presented by:

- Dave Munro (Tunnel Owner)
- History Trust of SA
- State Library of SA
- Australian Railway Historical Society

2. Steam Train Footage & History

Using imagery provided by the National Railway Museum in Port Adelaide, a display of historical photos of the train era of the tunnels between 1879 and 1919, and one of the first ever films created of a steam train going through the tunnel (supplied by the British Film Institute National Archive).

Presented by:

- National Railway Museum
- British Film Institute National Archive
- National Film and Sound Archive of Australia

Content note: *Don't forget to watch out for the cutouts of the train guards silhouetted along the tunnel.*

3. Soil Storytelling

The World Beneath our Feet

A projection piece titled 'The World Beneath our Feet' from the Barbican (UK performing arts centre) explaining the importance of organisms and mycelium networks in the ecosystem of soil.

Presented by:

- Barbican Centre

4. Time-Lapse Mushrooms

A montage of 200+ clips of time lapse footage of mushrooms growing by Steve Axford and Cath Marciniak, projected onto the curved contour of the tunnel roof, creating a peaceful “forest bathing” type experience. This was the first time this piece had been exhibited underground.

Presented by:

- Steve Axford
- Cath Marciniak

5. Glow in the Dark Mushroom World

Three-dimensional mushroom structures created by SA artist Clare Guerin using UV-reactive materials to create a fluorescent wonderland.

Presented by:

- Clare Guerin

6. Kaleidoscope

Through the use of lights and reflections, this 'Infinity' tunnel of mirrors, projections, light and music, creates an illusion of walking through a kaleidoscope of endless patterns created by SA Innovation company, Novatech.

Presented by:

- Novatech

Content note: *There is louder electronic music and moving lights in this space. There is no strobing, but the environment may be disorienting to some visitors. This is the second to last installation. If you wish to skip it can will turn and go back through the tunnel the way you came.*

7. Transcendent

A crescendo of train footage from Steam Ranger Heritage Railway coupled with drone footage over the foothills of Adelaide to create a poetic and uplifting spiritual epiphany to round out the experience, created by Watchpost (SA creative production studio).

Additionally, life-size cardboard cutouts of the railway guards who worked at Sleeps Hill Tunnel were displayed as an interactive photo opportunity at the safety cut-outs throughout the Tunnel.

Presented by:

- SteamRanger Heritage Railway
- Watchpost

Content note: *The beginning of this projection looks like a train light coming toward you – don't worry there is no train!*

Contact

- For more access information, you can contact:
 - **Fringe Access Line** on 08 8100 2089 or e-mail access@adelaidefringe.com.au
- Staff and volunteers will be available on site to assist throughout the event.

This visual story was created by Access2Arts. For feedback on this guide, contact A2A at hello@access2arts.org.au or by calling (08) 8463 1689.

Thank you!



Image: A room with walls and ceiling lined with mirrors. Rectangular platforms are lit up with neon green.